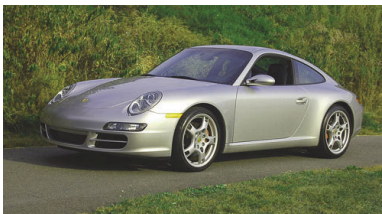


# 2005 911S C2 Coupe

# \$71,900



Arctic silver with black, full leather interior in this super clean, one owner C2. The 997 has the distinction of having the best of both worlds- the performance and modern drive of the 996 combined with the looks of the 993. Porsche really got this car right. The "S" version has the wider body, 355 hp and big red brakes. The additional power is readily apparent under acceleration- it feels great! Options include heated power supple leather seats, rear wiper, Xenon headlights, sport chrono package, and the Bose sound system with CD changer. Factory warranty applies through 09/08 or 50k miles. 13,500 miles. This vehicle is *Weissach Certified* for quality having successfully completed the [WEISSACH 96 Point Inspection](#) as performed by Porsche trained technicians at Daniel Jacobs LLC. *Weissach Certified* assures the buyer of vehicle quality and reliability and is backed the Weissach 12month/12k Power Train Plus Warranty. And keep in mind that your [WEISSACH WARRANTY](#) is valid anywhere in North America, not just in Oxford, CT.

Which Porsche model and year is best for you? Visit our [Porsche Model Guide](#)

### SPECIFICATIONS

<b>STOCK #:</b> 070904	<b>MODEL:</b> 911	<b>BODY STYLE:</b> Coupe	<b>SERIES:</b> 05-07 911
<b>YEAR:</b> 2005	<b>MILEAGE:</b> 13500	<b>DRIVE:</b> 2wd	<b>TRANS:</b> 6 spd
<b>EXT COLOR:</b> Arctic Silver	<b>INT COLOR:</b> Black	<b>TOP:</b> N/A	<b>CONDITION:</b> SCM 2+ <a href="#">Sports Car Market Rating</a>

### OPTIONS

<b>A/C:</b> Yes	<b>SUNROOF:</b> Yes	<b>LEATHER:</b> Full	<b>PWR STEER:</b> Yes
<b>AIR BAGS:</b> Yes	<b>ABS:</b> Yes	<b>TRACTION:</b> Yes	<b>CRUISE:</b> Yes
<b>PWR BRAKES:</b> Yes	<b>PWR WINDOWS:</b> Yes	<b>PWR LOCKS:</b> Yes	<b>GPS NAV:</b> no
<b>FOGLAMPS:</b> Yes		<b>CD PLYR:</b> Yes	<b>Litronics:</b> Yes
<b>REAR WIPER:</b> Yes	<b>ALARM:</b> Yes		
<b>MODIFICATIONS:</b> None			

